



Central Wimberley Wastewater Project - Status Update

January 24, 2020

Prepared By: Shawn Cox, City Administrator

Engineering

Aqua System Feasibility Study

Plummer Engineers completed the feasibility study on the HEB/Emergency Lane lift station. The conclusion of the analysis is, "This analysis suggests that the Emergency Lane lift station has adequate capacity to accept an additional 75,000 GPD from the new City of Wimberley collection system."

Construction

Lift Station (RR12 @ FM 3237)

The route of the force main and if/how we can attach to the Cypress Creek Bridge are variables we are evaluating to determine if any changes to the lift station are needed before we know if we need to make changes to the wet well. While the HEB/Emergency Lane lift station will not affect the size of the lift station at RR12 & FM 3237 we do not yet know what if any impact TxDOT's requirements for attaching to the Cypress Creek Bridge will have. As we discuss further below, we are coordinating now with TxDOT on that connection.

Collection Lines

The schedule for the installation of the collection systems gravity lines is as follows:

- Line I (Oldham and Ranch Road 12): February 17 – March 17
- FM 3237: March 18 – April 24

Lines will be installed starting about fifty (50) feet from our lift station at Ranch Road 12 and FM 3237 connecting to the line we have already installed on Rio Bonito. Following this, the lines on Ranch Road 12 will be installed (at night) then the lines on FM 3237 (during the day). We will be coordinating with all necessary property owners and we will make sure to provide traffic updates on our website and social media accounts.

Force Main Lines

The properties on Blue Hole Lane and the Deer Creek lift station will join into a force main line which will run down Blue Hole Lane to Old Kyle where it will connect to the gravity line on Old Kyle through a manhole. The plans are being finalized and a schedule will follow the design. This route can be found on the attached "Collection System Map". They are presented in orange.

The force main lines running from the lift station at Ranch Road 12 and FM 3237 are identified in green. The design for the portion of line will be finalized once all the necessary agreements are in place. Additionally, the design for the lines north of the creek will begin once we have the necessary feedback from TxDOT on our proposal to connect to the Cypress Creek Bridge.

Easements/Route

Easements

The proposed route of the force main will require agreements with two (2) property owners. Both owners have reviewed the City's request. We are continuing to negotiate with the necessary property owners and expect final approval of an easement to be made by Council at an upcoming meeting.

Texas Water Development Board (TWDB)

Coordination

The TWDB has updated on our project status. Additionally, we provided them with a copy of the "Collection System Map" (attached). We are working with them on any necessary coordination for additions to the project not previously reviewed.

TxDOT

Connection to Cypress Creek Bridge

On Monday (January 27) City provided TxDOT with its two proposed options for connecting the wastewater line to the side of the Cypress Creek Bridge. Those options are attached. Now that these have been provided to TxDOT, we can work with them to address any comments.

Capital Excavation, concurrently, is working with their sub-contractor, should a bore under the creek be necessary. The bore machine would probably need to be on the west side of the creek since there is limited room on the east side (Square side). They are looking at the radius that will be needed to get well under the creek then back up in about a horizontal distance of approximately 245 ft.

Ranch Road 12 (Force Main)

While we know the line will be installed via directional drilling, and that the work will be done during the day, but will not require road closures, Wimberley's utilization of TxDOT Right-of-Way (ROW) will require engineered plans be developed for TxDOT's review. Coordination with other utilities in the area will also be required. Development of these plans and coordination will be incorporated into an engineering contract with Plummer, which is discussed further below.

Contract

Wastewater Treatment Contract (Aqua Texas)

Council Member Barchfeld, Aqua Texas President Bob Laughman, Aqua's attorney, the City Attorney, and I had a very productive meeting yesterday (January 30). We expect an agreement to be ready for Council consideration in February.

Engineering (Design)

While we are reviewing whether Aqua can construct the line north of the creek, we are also working with Plummer Engineering on a proposal for engineering services to design this section of the project. There has been no design engineering on the connection to Aqua's lift station at HEB/Emergency Lane. In addition to design, this contract would also include bid coordination for construction of this section. Key

components to the proposal are any conditions TxDOT will ask for regarding connecting to the Cypress Creek Bridge. As stated above the City and Plummer are working on putting a rendering for review by TxDOT.

Communication

Property/Business Owners

Any property or business owners who would like to meet with the City, please reach out to me at scox@cityofwimberley.com. I am happy to provide an update on the status of the project.

As we did previously, the City and Capital Excavation will work with each property owner to determine the best location for their connection to the system. Additionally, we will coordinate any work in the Square and along Ranch Road 12 with the merchants to mitigate any impact to business.

Town Hall

A video of the Town Hall meeting held last night (January 30) can be found [here](#). Additionally, the slides from the presentation have been posted to the City's home page, which can be found [here](#).

Other Items

Sewer Utility Rates

Building from the previous rate studies the City has undertaken, and utilizing the developed models and schedules, a new rate model is being developed internally. The model will make sure the rate schedule adopted is enough to cover the cost of operating the utility system (maintenance/administration costs/etc.), payment of debt, capital improvements (major repairs/improvements). A draft is anticipated to be ready for Council discussion in late February or early March.

Impact Fees

The City started the development of its impact fees in 2016 with the selection of HDR to assist in the assessment and establishment of the fees. While this was to be completed in January 2017, no committee was established, and no fees were evaluated or adopted.

Based on the utilization of Aqua Texas to treat the wastewater produced, I am working with our City Engineer/Project manager and Plummer Engineering to determine if there is still a need to establish these fees.

Utility Billing

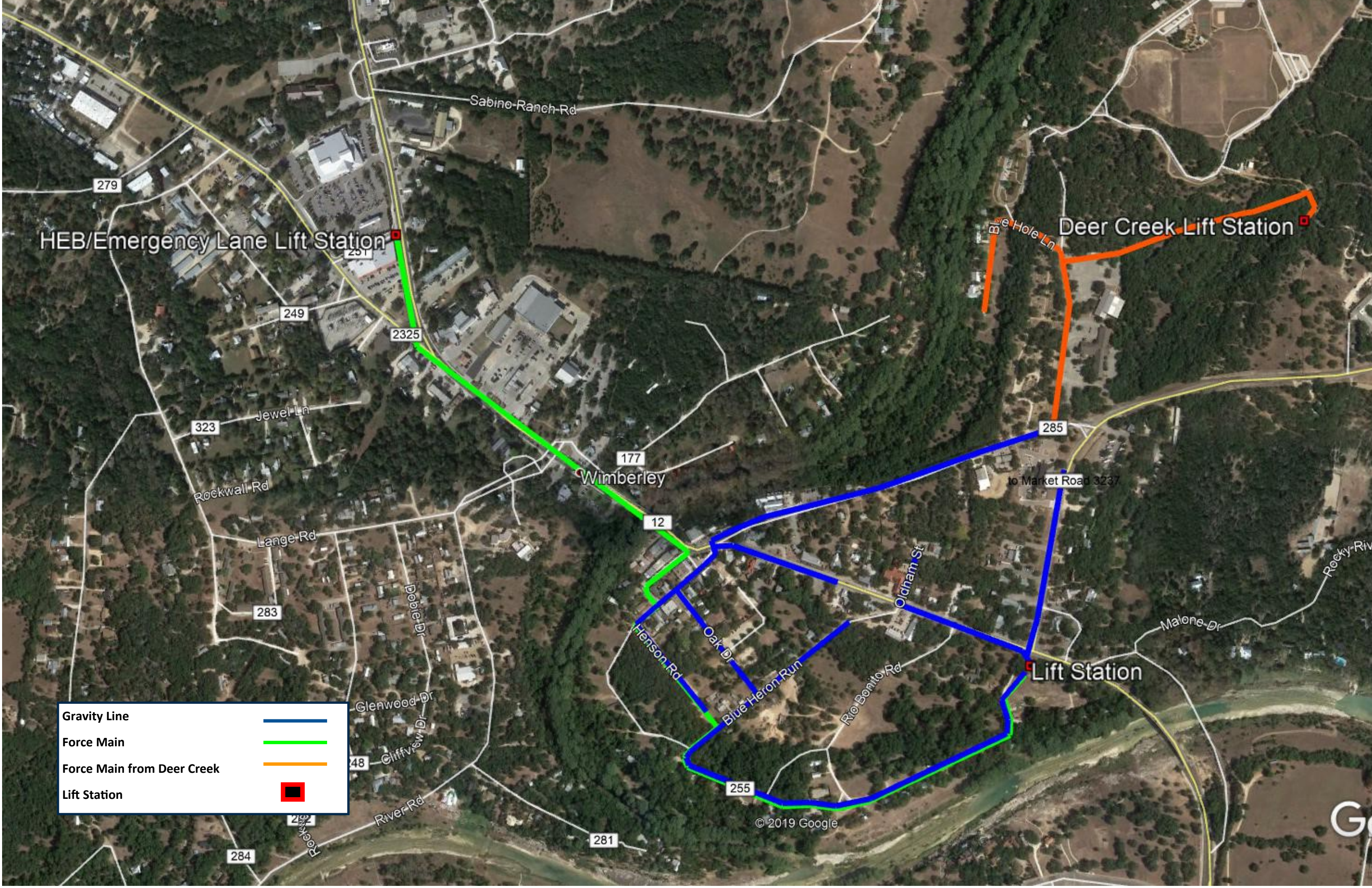
Currently the City's Financial Clerk sends out the utility bills for the City. There are only two (2) customers being billed. We are reviewing our current finance software and the modules it can accommodate to see if there is a solution for expanding our billing needs. We, along with the Wastewater Ad Hoc Advisory Committee have also looked at how this could be accomplished with the programs we have now. Options for Council consideration are anticipated to be reviewed in March or early April.

Schedule

Construction		
<u>Component</u>	<u>Start</u>	<u>Completion</u>
Collection Lines (CO#4)	February 2020	July 17, 2020
- Gravity Lines (RR12)	February 2020	March 2020
- Gravity Lines (FM 3237)	March 2020	April 2020
- Force Main (Deer Creek/Blue Hole)	TBD	TBD
- Lift Station	TBD	5 Months from Start
Collection Lines (Aqua Connection)	TBD	TBD
- Connection to Cypress Creek Bridge	TBD	TBD
- Force Main (RR12-Directional Drill)	TBD	TBD
- Tie in to HEB Lift Station	TBD	TBD
Contract		
Negotiate Aqua Contract	August 2018	February 2020
Other		
Update Sewer Utility Rates	January 2020	February/March 2020
Impact Fees	TBD	TBD
Utility Billing	January 2020	March/April 2020

Attachment(s)

- Collection System Map
- Cypress Creek Bridge Connection Options



HEB/Emergency Lane Lift Station

Deer Creek Lift Station

Wimberley

Lift Station

- Gravity Line —
- Force Main —
- Force Main from Deer Creek —
- Lift Station ■

Central Wimberley Wastewater Project

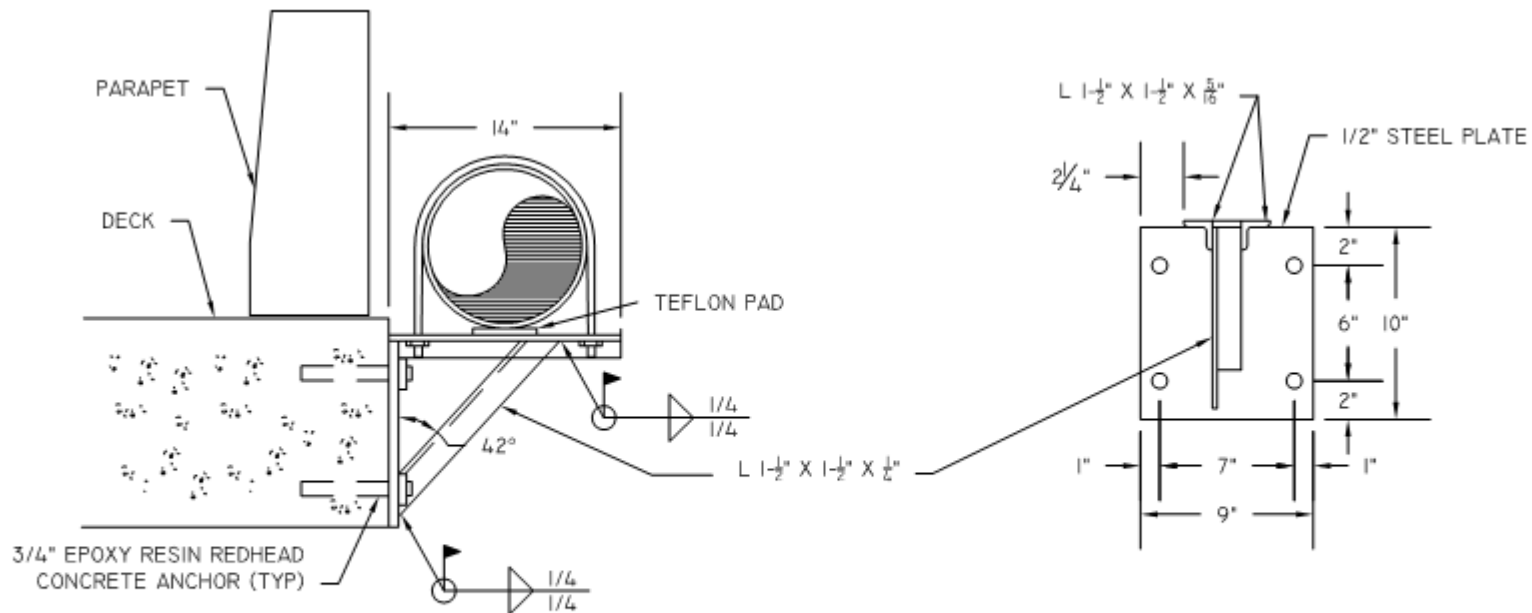
Connection to Cypress Creek Bridge



Option #1

Central Wimberley Wastewater Project

Connection to Cypress Creek Bridge



SIDE VIEW

FRONT VIEW

NOTES:

1. PIPE STRAPPING AND BRACKET MATERIAL SHALL BE 316 STAINLESS STEEL.
2. EPOXY ANCHORS SHALL BE 316 STAINLESS STEEL
3. PIPE STRAP SHALL BE SIZED TO FIT CL 250 D.I.P. OF SIZE SPECIFIED.
4. ALL PIPING TO HAVE FINAL PAINT COAT PRIOR TO INSTALLATION.

BEAUFORT - JASPER WATER & SEWER AUTHORITY		
BRIDGE ATTACHMENT DETAIL		
DATE 07/01/09	DRAWN BY: BMC	DRAWING # G-05
SCALE: N.T.S.	APPROVED BY: ERS	

Option #2