



Central Wimberley Wastewater Project - Status Update

April 17, 2020

Prepared By: Shawn Cox, City Administrator

Construction

Lift Station (RR12 @ FM 3237)

Capital has submitted the lift station wet well order to its subcontractor, and it is currently in the process of being built off site. Once constructed, the wet well will then be delivered for installation at the intersection of Ranch Road 12 and FM 3237. Total time to have the lift station operational is four to five months. The lift station is anticipated to be operational in August 2020.

Collection Lines

Capital Excavation is expected to complete the work on the gravity line running to the lift station at the intersection of Ranch Road 12 and FM 3237 by May 5. Work on the line along FM 3237 is expected to begin on June 1 and be completed by July 2. Construction of the remaining gravity line on Oldham and Ranch Road 12 will start on June 30 and finish on July 22.

Force Main Lines

The force main line running through the square has been installed and covered. The portion running down Henson to Blue Heron is expected to be completed by April 29.

Installation of the portion of force main connecting the existing lift station in Blue Hole with the line on Blue Hole Lane will start May 6. This portion, which is tying into the system on Old Kyle, is expected to be completed by June 5.

Texas Water Development Board (TWDB)

Coordination

The plans for the portion of the project not previously reviewed will be provided to the TWDB once completed. This is expected to be completed by next week (April 24). The TWDB has been updated on our project status, and the amended Plummer Associates contract includes this coordination. Review of the plans is anticipated to be complete by May 29. Once completed, TWDB should release their Environmental Findings for a 30-day public review. Once this review is completed the TWDB will be able to issue a favorable Environmental Finding.

The TWDB has also been provided the latest version of the Draft Wholesale Wastewater Treatment Agreement between the City and Aqua Texas. Their review of the contract will ensure the agreement is compliant with the provisions of the loan from the Clean Water Revolving Fund, which along with the issued bonds, is the funding mechanism for the design and construction of the project.

TxDOT

Review of Force Main Plans (South of Cypress Creek)

Plans for the portion of force main running along Ranch Road 12 were provided to TxDOT for review on March 25. Plummer Associates had a call with Reed Smith at TxDOT on March 27, but there have been no comments on the plans from TxDOT to date. We are continuing to follow up with Mr. Smith.

Review of Plans North of Cypress Creek (Force Main & Connection to Bridge)

Plummer Associates is finalizing the designing the force main and connection to the Cypress Creek Bridge. These plans are anticipated to be completed and provided to TxDOT for review by April 24. We anticipate this review to be completed by May 29.

Contract(s)

Wastewater Treatment Contract (Aqua Texas)

Council, at their Regular Meeting, held yesterday (April 16) discussed the latest version of the agreement with Aqua Texas. Based on the questions and comments received, the City Attorney and I will be following up with Aqua. The agreement will be discussed again at a Special Council Meeting on April 23.

Design Contract

The remaining design work is expected to be completed and submitted to TxDOT and the TWDB by April 24. This includes the connection to the Cypress Creek Bridge and line running north along Ranch Road 12 to the Heb/Emergency Lane lift station.

Communication

Frequently Asked Questions (FAQ's)

An updated list of frequently asked questions and answers is being put together. Previous lists focused on the construction of the plan and discharge. What we want to provide with this updated list are answers to the question our customers may have. Some we received already relate to rates, connection points, timing, etc. If there are specific questions you have, please send them to me at scox@cityofwimberley.com, so we can include them.

Property/Business Owners

Any property or business owners who would like to meet with the City, please reach out to me at scox@cityofwimberley.com. I am happy to provide an update on the status of the project.

As we did previously, the City and Capital Excavation will work with each property owner to determine the best location for their connection to the system. Historically, this involved going door to door to contact the resident or property owner. We will also utilize written notices to contact those we are unable to meet face to face. This will involve a notice at the property (typically on the front door) which will provide a time frame for construction and contact information for the contracts and City. If you think we may miss anyone, please have them contact me at scox@cityofwimberley.com. We will make sure they are included in the project's coordination.

Town Hall

A video of the Town Hall meeting held on January 30 can be found [here](#). Additionally, the slides from the presentation have been posted to the City's homepage, which can be found [here](#).

Other Items

Sewer Utility Rates

Building from the previous rate studies the City has undertaken, and utilizing the developed models and schedules, a new rate model is being developed internally. The model will make sure the rate schedule adopted is enough to cover the cost of operating the utility system (maintenance/administration costs/etc.), payment of debt, capital improvements (major repairs/improvements). A telephonic Council Workshop is being scheduled for April to discuss the rates and assumptions utilized.

Impact Fees

An "Impact Fee," per the Texas Local Government Code (Chapter 395.001(4)) is a "charge or assessment imposed by a political subdivision against new development in order to generate revenue for funding or recouping the costs of capital improvements or facility expansions necessitated by and attributable to the new development." This is a fee imposed to recover costs related to expanding a utility system in order to accommodate the new development(s).

The City, when it adopted its most current wastewater utility rates in 2017, included a "Capital Recovery Fee" of \$2,500 per each Living Unit Equivalent (LUE). A "Capital Recovery Fee" such as the one implemented by the City, is a fee assessed to recover costs a utility provider has fronted in order to install a utility system. The current fee established by the City only applies to customers initially connecting at the time the system is operational. It does not apply to customers already connected to the system (Deer Creek & Blue Hole) or new development starting after the system comes online. This is different than the "Impact Fee" defined above.

Based on the utilization of Aqua Texas to treat the wastewater produced, I am working with our City Engineer/Project manager and Plummer Engineering to determine if there is still a need to establish impact fees.

Utility Billing

Currently the City's Financial Clerk sends out the utility bills for the City. There are only two (2) customers being billed. We are reviewing our current finance software and the modules it can accommodate to see if there is a solution for expanding our billing needs. We, along with the Wastewater Ad Hoc Advisory Committee, have also looked at how this could be accomplished with the programs we have now. Options for Council consideration are anticipated to be reviewed at a Council Workshop in April (date is TBD).

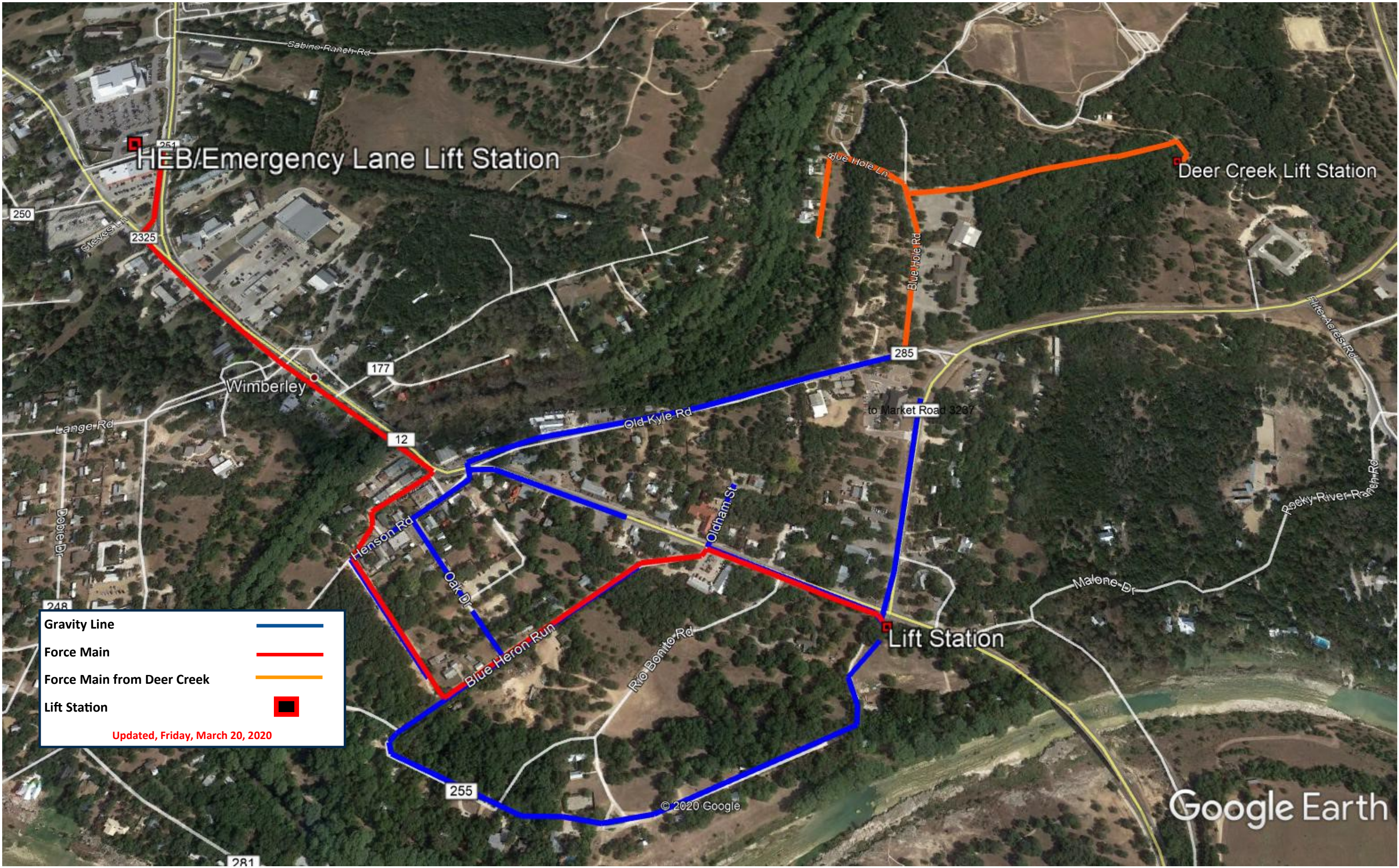
Schedule





An updated schedule chart has been put together by our Project Manager at Gilpin Engineering. Included in the chart is the construction schedule provided by Capital Excavation and the design/review schedule from Plummer Associates.

Construction		
<u>Component</u>	<u>Start</u>	<u>Completion</u>
Collection Lines (CO#4)	February 2020	August 2020
- Gravity Lines (RR12)	June 2020	July 2020
- Gravity Lines (FM 3237)	June 2020	July 2020
- Force Main (Deer Creek/Blue Hole)	May 2020	June 2020
- Lift Station	April 2020	August 2020
Collection Lines (Aqua Connection)	July 2020	October 2020
- Design Force Main	February 21, 2020	April 2020
- Connection to Cypress Creek Bridge	Pending Review from TxDOT	2-3 Weeks from Approval
- Force Main (RR12-Directional Drill)	Pending Review from TxDOT	2-3 Months from Awarded Contract
- Tie in to HEB Lift Station	Currently Being Designed	October 2020
Contract		
Negotiate Aqua Contract	August 2018	April/May 2020
Other		
Update Sewer Utility Rates	January 2020	April 2020
Impact Fees	TBD	TBD
Utility Billing	January 2020	April 2020

Attachment(s)

- Collection System Map
- Wastewater Collection System Schedule



Gravity Line	
Force Main	
Force Main from Deer Creek	
Lift Station	

Updated, Friday, March 20, 2020

© 2020 Google

Google Earth

City of Wimberley Wastewater Collection System

